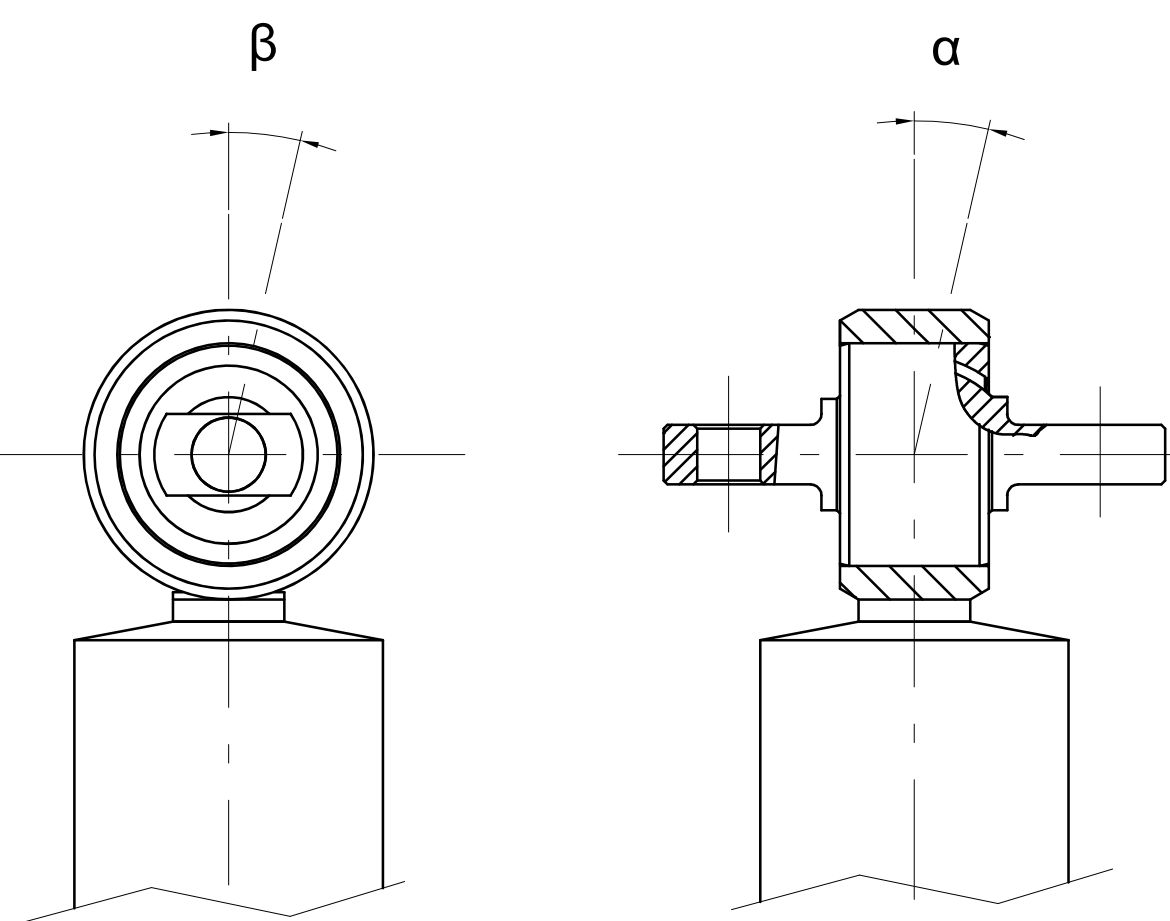


Reproduction, dissemination or use of this document or its contents in any form without the prior written permission of TURASAS is prohibited. Offenders will be liable for the payment of damages. All rights reserved in the event of the grant of a patent, utility model or ornamental design registration.

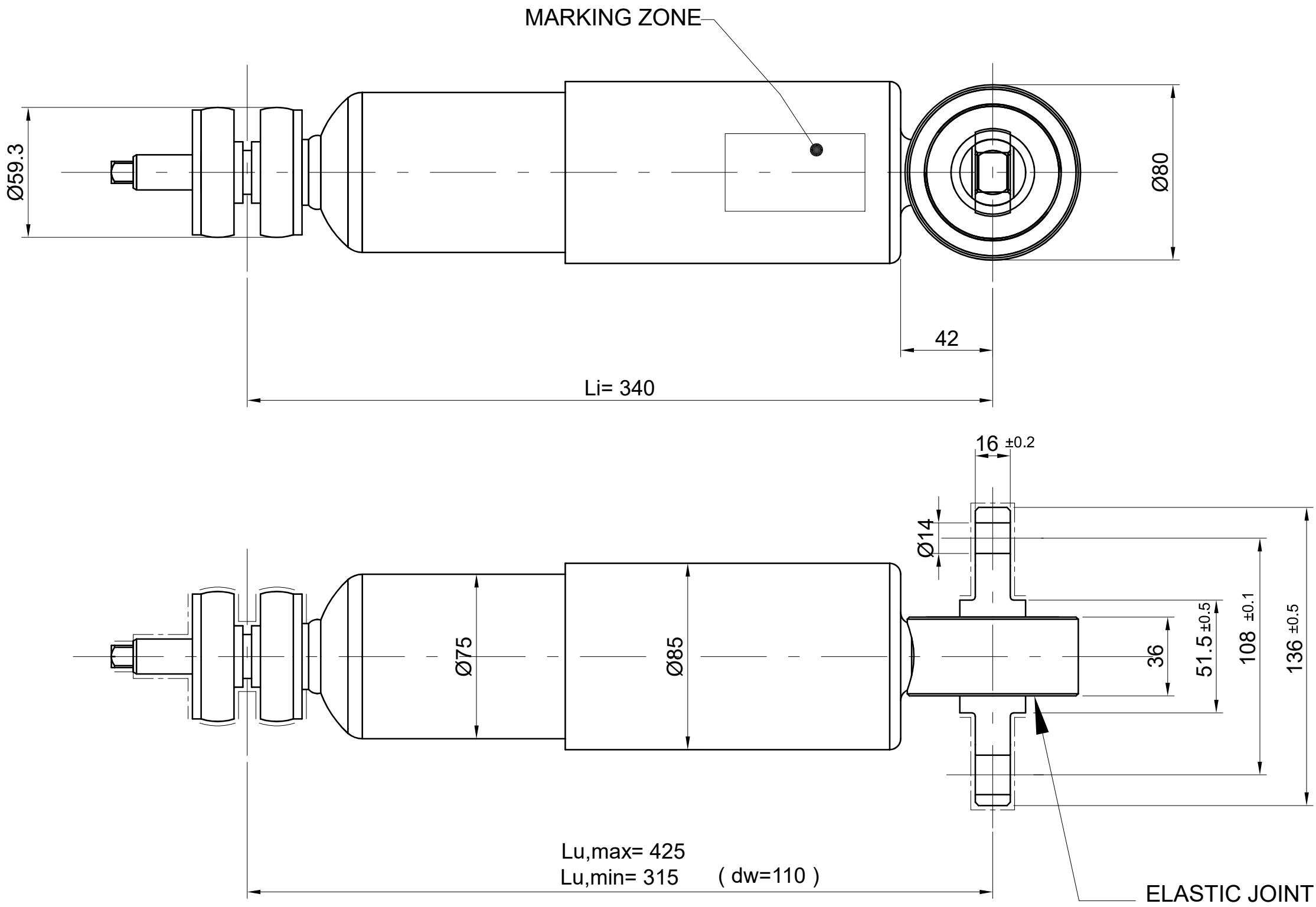
ISO 13920 Welded Construction	ISO 2768 General Tolerances			S 12708 Steel Casting		
	<1000	6,0	0,8			
	<630	4,0	0,7			
	<400	3,0	0,6			
	<250	3,0	0,4			
	100	2,0	0,3			
	40	1,5	0,2			
	L mm	Ham.	Isl.			
	Nom. Size	Class				
	<4000	2,0	0,4			
ISO 2768 General Tolerances	<2000	1,2	0,4			
	<1000	0,8	0,3			
	<400	0,5	0,3			
	30-120	0,3	0,2			
	2-30	0,2	0,1			
	L mm	m ±	K ±			
	Nom. Size	Class				
	>20000	9,0	8,0			
	<20000	8,0	7,0			
	<16000	7,0	6,0			
ISO 13920 Welded Construction	<12000	6,0	5,0			
	<8000	5,0	4,0			
	<4000	4,0	3,0			
	<2000	3,0	2,0			
	<1000	2,0	1,5			
	<400	1,0	1,0			
	30-120	1,0	0,5			
	2-30	1,0	0,5			
	L mm	A ±	E ±			
	Nom. Size	Class				



Angle	MAX.	Normal Service
α	1,5°	0,5°
β	3°	1°

Li	Length to mounting
Lu Max/Min	lengths in work
dw	Max stroke

Technical Specifications					
Technical Document					
Fixture/Mould Asset ID.		02	UPDATING NOMINAL LEGHT	18/02/2026	T.ŞABA
Coating/Heat Tre./Roughness		01	UPDATING DRAWING	01/09/2021	S.Ponzo
Paint/Color		Modf. No	Modification Description	Date	Sign

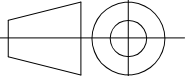


All metal part identified shall be galvanized with treatment Fe / Zn 12c 2D according to EN ISO 2081:2009 or equivalent.

-Design according to Technical Specification TS-04.081

R2	* = Test stroke		*		*	
	Stroke	mm	50	50		
	r.p.m.	min ⁻¹	38.2	114.6		
	Velocity	m/s	0.100	0.300		
	Rebound	N	2600 ±390	4200 ±630		
	Compression	N	2600 ±390	4200 ±630		
Damping forces test at : 20°±2°C						

	Upper fixation	Lower fixation
R2 Radial stiffness	15 kN/mm	4.5 kN/mm

Item No	Designation Name of Item	Qty.	Standard Code Identification No	Material	Dimension	Weight (Kg)
TYP	ISO 1302	ISO 8015	ISO 2553	General Tol.	ISO 2768	f <input type="checkbox"/> m <input type="checkbox"/> H <input type="checkbox"/> K <input type="checkbox"/>
	EN 15085-2 Certification Level		CL1 <input type="checkbox"/> CL2 <input type="checkbox"/>	Weld Pro.	ISO 13920	A <input type="checkbox"/> B <input type="checkbox"/> E <input type="checkbox"/> F <input type="checkbox"/>
			CL3 <input type="checkbox"/> CL4 <input type="checkbox"/>	Cast Steel	ISO 12708	Lm2 <input type="checkbox"/> Lr2 <input type="checkbox"/> Sm2 <input type="checkbox"/> Sr2 <input type="checkbox"/>
	Approved	M. GORLANI		Scale	<div>TURASAS</div> <div>Turkish Railway Vehicles Industry Inc.</div>	
	Checked	M. BORLO		1:2		
	Prepared	H. BELHAJ				
		PRIM.SUSP. VERT. DAMPER			GZ90.04.10.00009	
Date: 14/07/2021	Parts List No:		Sheet: 1/1	Size:A2		